

Urban Farm

Letter of Interest Request

Prototype Park & Letter of Interest Context

Guadalupe River Park Conservancy
March 29, 2023

Overview

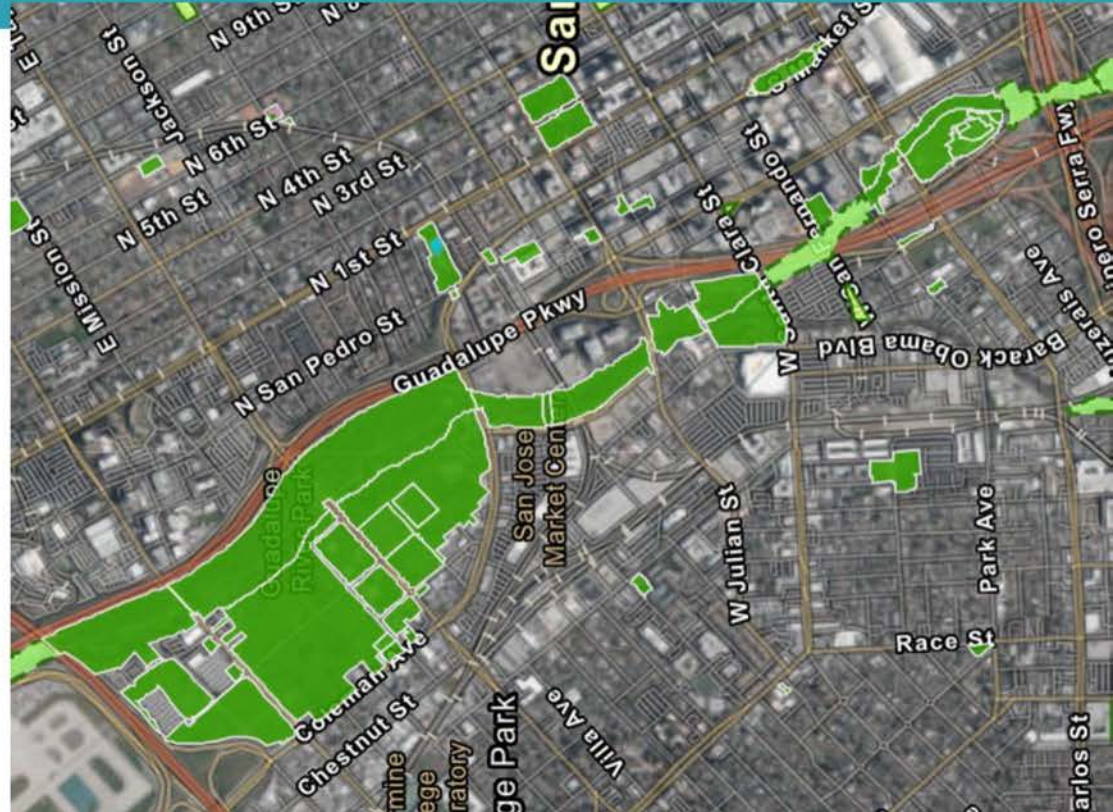
The Guadalupe River Park Conservancy (GRPC) is seeking Letters of Interest (LOI) from a **non-profit partner or partners** to cultivate, program, and provide stewardship services to operate a new public urban farm facility (Urban Farm) in downtown San Jose.

Presentation Outline

- Background on the Guadalupe Gardens
 - Prototype park
 - Project Considerations
 - Goals of the Urban Farm
 - Objectives of the LOI
 - Submission Process
-

Guadalupe River Park and Gardens

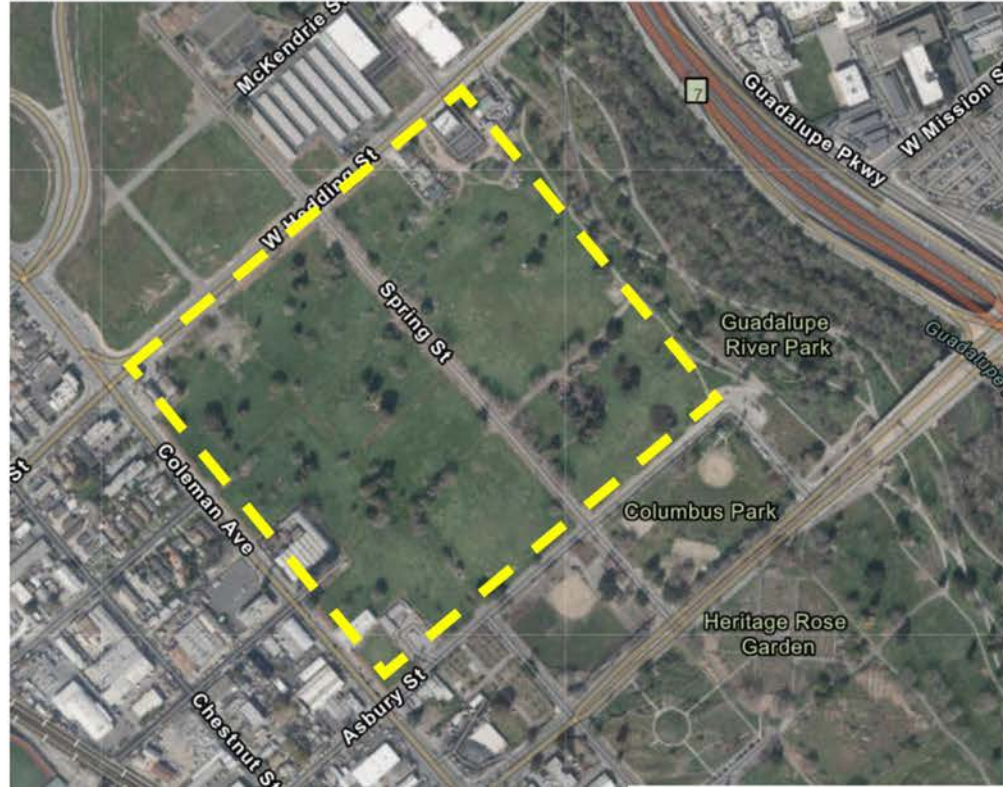
- 250-Acre Park originally conceived in the 1960's
- In 1987 council recommended development of this urban park
- Three areas extending from Discovery Meadow to I-880:
 - Guadalupe River Park
 - Guadalupe River Trail
 - Guadalupe Gardens



**City of San Jose, Shape the Future of Guadalupe Gardens, December 8, 2021*

The Guadalupe Gardens

- Master Plan dated 2002
- Property acquired with FAA funding
 - Approximately 30 acres developed south of Taylor Street
 - 40 Acres north of Taylor Street is subject of this discussion
- Columbus Park predates creation of Gardens



**City of San Jose, Shape the Future of Guadalupe Gardens, December 8, 2021*

Prototype Park



Legend

-  Dog park - 5 acres
-  Proposed park-yard expansion
-  Potential future commercial development
-  Meadows - 4 acres
-  Future partners / urban agriculture - 18 acres
-  Disc golf, interspersed with meadows - 13 acres
-  10' Interim walking path

Project Considerations

- Phase I Prototype Park: Quick build short term projects
 - Assessment for soil contamination are on going
 - Construction of dog park to begin in Q2 2023
 - Ongoing coordination for disc golf course and meadow plantings
 - Longer term improvements will be considered for Phase II
 - There is no funding to construct park amenities at this time
 - Long term maintenance funding for park amenities will be recommended based on feedback received
-

Urban Farm at Prototype Park

The Goal of the Urban Farm is to:

- Actively cultivate and operate a maximum area of 18 acres within the Guadalupe Gardens,
 - Provide public programs and engagement opportunities for the community that advance the principles of the Department of Parks, Recreation and Neighborhood Services strategic plan, [ActivateSJ](#),
 - Provide park-serving amenities and benefits that improve community health and quality of life,
 - Ensure that the space is welcoming, well-maintained, and positively contributes to the park user experience.
-

Objectives of the Letter of Interest

- To connect with organizations with the capacity and interest to operate and program the urban farm
 - To guide the development of the urban farm project:
 - Draw park users through design and programming
 - Establish a project scope, budget, and footprint of the urban farm
 - Ensure infrastructure and amenities are in place for business operations and site stewardship
 - To better understand and anticipate farm operational needs, and its alignment to FAA guidelines on airplane approach zones and community benefit designations.
-

Submission Process

GRPC is seeking partners where:

- The agency must be a 501(c)3 nonprofit where operating an urban agriculture farm will achieve their mission and provide community benefits.
 - The agency possesses knowledge, experience, and capacity to operate an urban farm, including the ability to deliver public programs.
-

Submission Process

Submit a Letter of Interest no more than four pages excluding photos or graphics to info@grpg.org no later than **Friday, April 28, 2023 at 5:00pm.**

The LOI should cover:

1. The Agency's knowledge or experience in urban farm operations and public programming
2. Proposed business operating model for the Urban Farm
3. Target populations within the City your operations/programs would serve

Complete details regarding the LOI submission process is located in the "Prototype Park - Urban Farm Letter of Interest Request" document.
