

Corporate Engagement with the Guadalupe River Park



Guadalupe River Park Conservancy envisions an active, iconic, world-class **Civic Greenway in Downtown San Jose** encompassing gardens, trails, and parks where residents and visitors alike can experience open space and natural habitats in the heart of Silicon Valley. The Conservancy is leading the march towards redevelopment, activation, and stewardship of the park and gardens, with the aim of building a lasting park for the ages.

Corporate volunteerism is a meaningful way to give back to the community through hands-on project support, create a positive corporate image, demonstrate social responsibility, and provide community leadership.

We provide access to a unique environment for team building that gives participants the opportunity to experience first-hand this slice of nature in the heart of Silicon Valley.



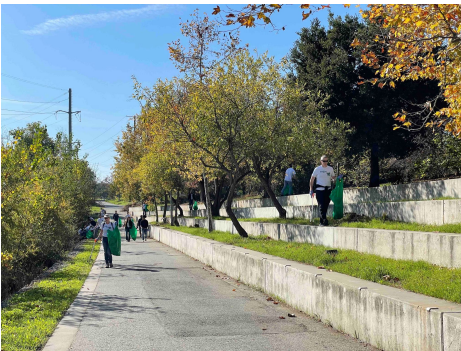
Why Volunteer with Us?

We offer a unique team building environment that incorporates the park's Heritage Rose Garden, three-acre Historic Orchard, active use trails, river, and much more. We will work with you to find the right project for your group, then provide an introduction and orientation as well as training that day.

Our year-round activities can last two to three hours or more depending on the season and current needs. We are able to accommodate just about any sized group!

Workday Activities Include:

- Trail and Park clean ups, weeding, and special projects
- Orchard mulching, weeding, fruit harvesting, and special projects
- Heritage Rose Garden deadheading, weeding, and mulching
- Rotary PlayGarden and Visitor Center weeding, mulching, and beautification



Corporate Volunteer Program Pricing

Pricing by Group Size

Max Group Size	Donation Amount
25	\$1,500
50	\$2,500
100 ¹	\$5,000
200 ¹	\$10,000
500 ²	\$25,000

 GUADALUPE RIVER PARK CONSERVANCY

1. Can be shared over 2 events.
2. Can be shared over 3-and 5 events



All donations are fully tax-deductible and support the supplies*, coordination, and preparation of our volunteer events, as well as GRPC's overall mission and programs. Donations also come with our Corporate Partner parks found on the following page.

For more information, visit grpg.org or email volunteer@grpg.org!

*Please note, we are unable to provide gloves at this time due to extraordinary sanitization requirements. Gloves such as [these](#) or [these](#) are ideal and must be provided by volunteers or the group organizer for garden activities.



Corporate Partner Perks!

	Supporter (\$1,000)	Advocate (\$2,500)	Steward (\$5,000)	Naturalist (\$10,000)	Conservationist (\$25,000+)
Customized employee volunteer workday by size (starting at \$1,500)	25 ¹	50	100 (or shared over 2 events)	200 (or shared over 2 events)	500 ² (shared over 3-5 events)
Monthly E-News and Quarterly Newsletter	●	●	●	●	●
Recognition in the Annual Report and Website	●	●	●	●	●
Complimentary tickets to Window on the River Park event	●	●	●	●	●
Guided Guadalupe River Park Eco-Tour ³			●	●	●
Customized Presentation by GRPC Leadership ⁴				●	●
Recognition as Institutional Supporter in Community Events					●



1. Requires \$1500 donation 2. Max capacity per workday is 200 volunteers 3. Per availability of GRPC leadership
 4. Must be scheduled at least 4 weeks in advance and subject to staff availability; maximum group size 30 per tour

